

3 Pioneer Street

Table of Contents

- | [Property Details](#)
- | [Photo Gallery](#)
- | [Map](#)
- | [Contact For Inspection](#)

Property Details

3 Pioneer Street, CASINO



SOLD BY THE WAL MURRAY RURAL DEPT

3  **1**  **2** 

Conveniently located in a cul de sac near the Casino Hospital, schools and train station, this 3 bedroom house with 2 living areas is set on a 563m2 block.

The home features a north east facing lounge room with combustion woodheater, dining room with cork tiles, large kitchen with separate walk-in pantry,

3 good size bedrooms, 2 with wardrobes plus a second living area/rumpus room or 4th bedroom with cupboard. A central bathroom with shower over bath, toilet, and hand basin.

Outside is a fully fenced yard, a carport with single lockup garage, covered BBQ area and a garden shed to safely store all your belongings.

In original condition and currently tenanted, the property has the potential to return \$290-300pw. The long term tenant is happy to stay on if the option is offered.

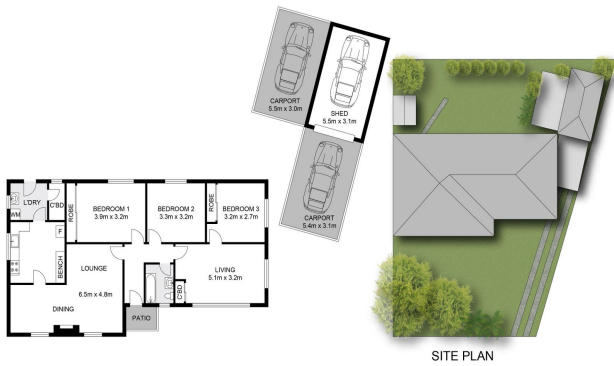
For your private inspection please contact Gary Ghilardi on 0438 868 627.

- 3 Bedrooms
- 1 Bathroom
- 1 Garage
- 1 Carport
- Rumpus Room
- Fully Fenced

\$295,000

Photo Gallery





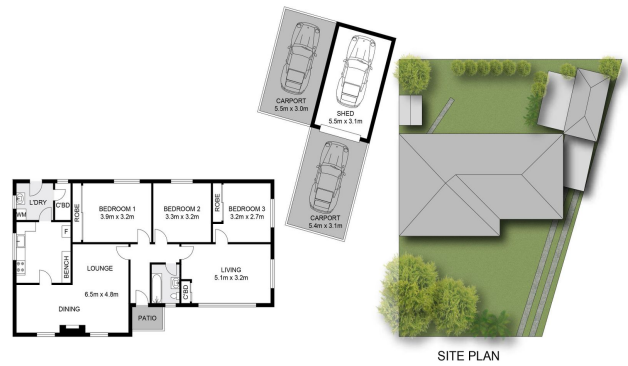
SITE PLAN

INT : 104.5m²
EXT : 2.1m²
CARPORT / SHED : 52.0m²



3 Pioneer Street, Casino

Scale in meters, indicative only. Dimensions are approximate. All information contained herein gathered from sources we believe to be reliable. However we cannot guarantee its accuracy and interested persons should rely on their own enquiries to us or a registered valuer.



SITE PLAN

INT : 104.5m²
EXT : 2.1m²
CARPORT / SHED : 52.0m²



3 Pioneer Street, Casino

Scale in meters, indicative only. Dimensions are approximate. All information contained herein gathered from sources we believe to be reliable. However we cannot guarantee its accuracy and interested persons should rely on their own enquiries to us or a registered valuer.

Map



Contact For Inspection



GARY GHILARDI

RURAL & LIFESTYLE SALES SPECIALIST

0438 868 627

garyg@walmurray.com.au